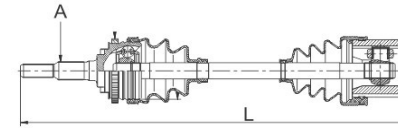
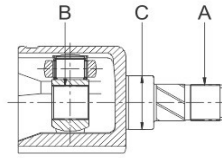
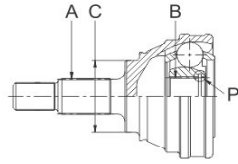
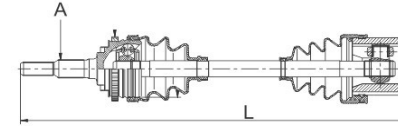
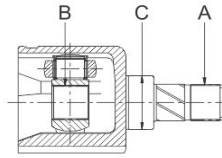
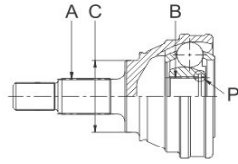


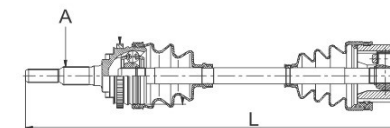
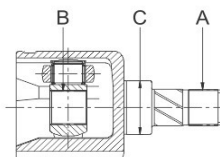
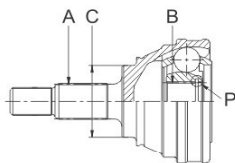
CAR APPLICATION	YEAR	MT/AT	L/R	GSP DRIVE SHAFT	Dimension			GSP Outer CV Joint	Dimension				GSP Inner CV Joint	Dimension			
					A	B	L		A	B	C	P		A	B	C	
BESTURN																	
BESTURN B50	2.0		AT	L/R				834089	28	24	56	M					
BESTURN B70	2.3		AT	L/R				834063	28	32	56	I					
BYD																	
F3	1,6		MT	L	269008	26	25	633	869005	26	32	58	M	699089	25	29	41
F3	1,6		MT	R	269007	26	25	917,5	869005	26	32	58	M	699089	25	29	41
F3	1,6		MT	L/R				869002	26	30	58	M					
L3	1,8		AT	L	259322	26	23	646	869006	26	30	58	I	669002	23	24	38
F0	1.0		MT	L	269003	24	24	645	869003	24	21	50,9	M	669001	24	21	34
F0	1.0		MT	R	269004	24	24	837	869003	24	21	50,9	M	669001	24	21	34
F6	2.0		MT	L	269005	26	25	656	869004	26	24	63	I	671001	25	24	41
F6	2.0		MT	R	269006	26	25	996	869004	26	24	63	I	671001	25	24	41
FLYER Four cylinder			MT	L/R				857007	23	19	49	M	657003	22	18	35	
FLYER Four cylinder			MT	L/R				857006	23	19	44	M	699103	22	19	35	
Changfeng Liebao																	
Changfeng Liebao			MT	L	239124	28	28	604.5	899040	28	25	56	M	639006	28	25	34,7
Changfeng Liebao			MT	R	239125	28		523	899040	28	25	56	M	639012		25	
CHANGAN																	
Yuexiang	1,5		AT	L	275006	25	22	625	875010	25	29	52,5	I	675006	22	22	38
Yuexiang	1,5		AT	R	275018	25	22	934	875010	25	29	52,5	I	675010	22	29	29,5
CHANGAN Yuexiang	1,5		MT	L	234105	25	23	639	834115	25	29	52,5	I	634052	23	29	40
CHANGAN Yuexiang	1,5		MT	R	234106	25	23	921,5	834115	25	29	52,5	I	634053	23	29	29,5
Benben	1,3		MT	L	257056	23	22	609.5	857090	23	19	49	M	657039	22	19	35
Benben	1,3		MT	R	257057	23	22	847.5	857090	23	19	49	M	657039	22	19	35
Benben MINI	1.0		MT	L	238006	23	22	562,5	838004	23	20	51	M	638005	22	20	35
Benben MINI	1.0		MT	R	238007	23	22	832	838004	23	20	51	M	638006	22	20	35
Zhixiang CX30	1,6		MT	L	275007	33	23	646	875008	33	25	52	M	634052	23	29	40
Zhixiang CX30	1,6		MT	R	272001	33	23	931	875008	33	25	52	M	634052	23	29	40
Zhixiang CX30	1,6		AT	L	275008	33	23	640	875009	33	30	52	I	675007	23	29	40
Zhixiang CX30	1,6		AT	R	272001	33	23	931	875008	33	25	52	M	634052	23	29	40



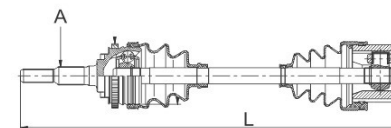
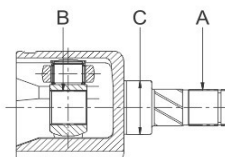
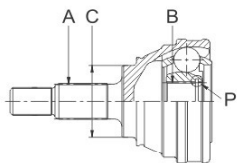
CAR APPLICATION	YEAR	MT/AT	L/R	GSP DRIVE SHAFT	Dimension			GSP Outer CV Joint	Dimension				GSP Inner CV Joint	Dimension			
					A	B	L		A	B	C	P		A	B	C	
Great Wall																	
Hover H3/H5			L	226008	17	17	608	875001	17	25	53	M	675001	17	24	30	
Hover H3/H5			R	226008	17	17	608	875001	17	25	53	M	675001	17	24	30	
MINI			L	275011	24	23	570	859327	24	21	56	M	675008	23	20	34	
MINI			R	275012	24	23	843	859327	24	21	56	M	675008	23	20	34	
TENGYI			L	275013	26	23	642	859328	26	22	55,9	M	675009	23	29	34	
TENGYI			R	275014	26	23	883	859328	26	22	55,9	M	675009	23	29	34	
FLORID			L	275015	24	23	872	859329	24	22	55,9	M	675009	23	29	34	
FLORID			R	275016	24	23	629	859329	24	22	55,9	M	675009	23	29	34	
DONGFENG																	
JOYEAR	1,8		MT					810103	25	24	52	M					
JOYEAR	1,8		MT	L	275019	25	25	640.5	810103	25	24	52	M	675011	25	24	41
JOYEAR	1,8		MT	R	275017	25	25	943	818233	25	24	52	M	651009	25	24	41
Soueast Motor																	
Soueast Lioncel	1,6		MT	L	239126	25	25	610	839088	25	30	54	M	639027	25	30	41
Soueast Lioncel	1,6		MT	R	239127	25	25	929	839088	25	30	54	M	639027	25	30	41
Soueast V3 Outer CVJ			MT	L/R				839100		25	23	54	M				
FOTON																	
Midi	1,5		MT	L	275009	25	25	587	875012	25	29	58,5	I	699089	25	29	41
Midi	1,5		MT	R	275010	25	25	880	875012	25	29	58,5	I	699089	25	29	41
GEELY																	
3 CYL (Three-cylinder)				L	214048	24	23	638	814014	24	21	54	M	614016	23	21	45
3 CYL (Three-cylinder)				R	214047	24	23	838	814014	24	21	54	M	614016	23	21	45
4 CYL (Four-cylinder)				L	214050	24	25	561	865001	24	21	54	I	614013	25	20	45
4 CYL (Four-cylinder)				R	214049	24	25	914	865001	24	21	54	I	614013	25	20	45
HaoQing/YOULIOU			MT	L/R				814014		24	21	54	M	614001	23	19	45
HaoQing/YOULIOU			MT	L/R				814014		24	21	54	M	614016	23	21	45
HaoQing/LEADING			MT	L/R				814013		24	21	54	M	614002	25	19	45
YOULIOU 4CYL/7131			MT	L/R				865001		24	21	54	I	614002	25	19	45
Meiri			AT	L/R				865001		24	21	54	I	614002	25	19	45



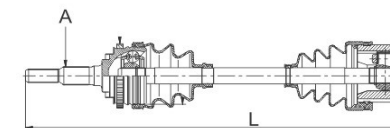
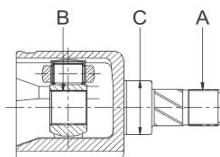
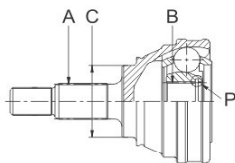
CAR APPLICATION	YEAR	MT/AT	L/R	GSP DRIVE SHAFT	Dimension			GSP Outer CV Joint	Dimension				GSP Inner CV Joint	Dimension			
					A	B	L		A	B	C	P		A	B	C	
LEADING		MT	L/R					865002	24	21	54	I	665004	25	21	45	
Ziyoujian	1,3	MT	L/R					865001	24	21	54	I	614002	25	19	45	
Ziyoujian	1.6	MT	L/R					865006	24	30	54	I					
Ziyoujian	1,6	MT	L/R					865003	24	23	54	M	614007	25	22	45	
Jingang		2006-2008	MT	R	265002	24	25	935	865004	24	30	59	I	665008	25	29	35
Jingang		2006-2008	MT	R	265001	24	25	601	865004	24	30	59	I	665007	25	29	45
Jingang/Ziyoujian	1,5		MT	L/R				865004	24	30	59	I	665006	25	22	45	
Jingang/Ziyoujian	1,5		MT	L/R				865005	24	23	59	M	665006	25	22	45	
Yuanjing(HUAPU Haijing)	1.5/1.8		MT	R				865007	26	23	58	I	665003	25	23	34	
Yuanjing(HUAPU Haijing)	1.5/1.8		MT	L				865007	26	23	58	I	665002	25	23	35	
GUANGZHOU YUNBAO																	
GUANGZHOU YUNBAO			L		241148	32	29	684	835017	32	34	62	I	636002	29	34	39
GUANGZHOU YUNBAO			R		218241	32	29	1035	835017	32	34	62	I	618062	29	34	33
YUNQUE																	
YUNQUE			MT	L/R					856014	24	19	50	M				
ZASTAVA																	
488小红旗 化油器									803043	38	25	59,5	O	603003		33	
SHIJIXING/V6					263003	38		615	803014	38	25	59,5	O	603001		28	
MINGSHI/SMALL ZASTAVA 5 CYL									803043	38	25	59,5	O	603001		28	
MINGSHI/SHIJIXING									863002	38	32	59,5	O	663001		32	
HAFEI																	
BAILI			MT	L/R					808004	23	19	44	M	608018	22	19	35
Lubao			MT	L					870001	23	19	49	M	699103	22	19	35
Lubao			MT	R	270001	23	22	832	870001	23	19	49	M	657011	22	19	35
Saima			MT	L/R					870002	25	29	57	I	699089	25	29	41
SAIBAO			MT	L/R					870002	25	29	57	I	639029	25	22	41
SAIBAO			MT	L/R					839073	25	22	57	I	639029	25	22	41
SAIBAO									839086	25	30	57	I				
BRILLIANCE JINBEI																	
BRILLIANCE JUNJIE FRV	1.6/1.3		AT/MT	L	239111	36	25	638	839130	36	29	53	I	699089	25	29	41



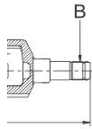
CAR APPLICATION		YEAR	MT/AT	L/R	GSP DRIVE SHAFT	Dimension			GSP Outer CV Joint	Dimension				GSP Inner CV Joint	Dimension		
						A	B	L		A	B	C	P		A	B	C
BRILLIANCE JUNJIE FRV	1.6/1.3		AT/MT	R	239112	36	25	925	839130	36	29	53	I	699089	25	29	41
JINBEI Grace	2,4		AT/MT		275001	30		674	875002	30	24	63	I	675002		24	
JMC (Jiangling Motors Co., Ltd)																	
Baodian pickup/LANDWIND 4WD			MT	L	226005	17	25	956.5	899029	17	25	53	O	699013	25	32	28
Baodian pickup/LANDWIND 4WD			MT	R	299054	17	25	567	899029	17	25	53	O	699012	25	32	28
ISUZU/QINGLING JEEP	2,3		MT	L	226001	17	23	952.5	826002	17	23	53	M	626004	23	23	28
ISUZU/QINGLING JEEP	2,3		MT	R	219002	17	23	562	826002	17	23	53	M	626005	23	23	28
ISUZU Pickup/QINGLING JEEP(Four drive)	2,8			L	226011	17	17	971	826014	17	25	53	M	626010	17	26	30
ISUZU Pickup/QINGLING JEEP(Four drive)	2,8			R	226012	17	17	553	826014	17	25	53	M	626011	17	26	30
ISUZU Pickup			MT	L										626007	17	26	30
ISUZU Pickup			MT	R										626008	17	26	30
ISUZU JEEP	2.8TD		MT	L	219003	17	17	1002	826003	17	26	53	M	626001	17	26	30
ISUZU JEEP	2.8TD		MT	R	219004	17	17	588	826003	17	26	53	M	626002	17	26	30
Luba																	
BAW Luba				L/R	259038	30	27	620.5	859072	30	34	69	I	659016	27	34	47
LIFAN																	
LIFAN	1,3		MT	L	273001	25	25	542	810058	25	30	59	I	673001	25	21	45
520									899067	25	30	59	I				
620			MT	R	273002	26	25	952	859330	26	32	58	M	673002	25	30	45
620	1,6		MT						810058	25	30	59	I				
JAC																	
Binyue				L	274001	25	27	672	875011	25	30	54	I	674001	27	24	41
Binyue				R	274002	25	25	979	875011	25	30	54	I	651009	25	24	41
Rein									875004	27	25	60	O				
Heyue	1.5/1.8		MT	L	274003	27	25	643	875004	27	25	60	O	674002	25	24	41
Heyue	1.5/1.8		MT	R	274004	27	25	931	875004	27	25	60	O	674002	25	24	41
Heyue									824102	27	25	60	M				
Tongyue (4G13 Engine)	1.3	2008	MT	L	274005	25	23	605,5	875005	25	21	52,5	I	674003	23	20	40
Tongyue (4G13 Engine)	1.3	2008	MT	R	274006	25	23	916	875005	25	21	52,5	I	674003	23	20	40
Tongyue (VVT Engine)	1.3	2008	MT	L	274007	25	25	615,5	875006	25	29	52,5	I	674004	25	29	35



CAR APPLICATION	YEAR	MT/AT	L/R	GSP DRIVE SHAFT	Dimension			GSP Outer CV Joint	Dimension				GSP Inner CV Joint	Dimension			
					A	B	L		A	B	C	P		A	B	C	
Tongyue (VVT Engine)	1.3	2008	MT	R	274008	25	28	556	875006	25	29	52,5	I	634022	28	29	43
CHERY																	
QQ	0.8		MT	L	268001	22	22	610	899103	22	19	51	O	699103	22	19	35
QQ	0.8		MT	R	268002	22	22	796	899103	22	19	51	O	699103	22	19	35
QQ	1,1		MT	L	268003	22	22	599	899101	22	19	51	M	657011	22	19	35
QQ	1,1		MT	R	268004	22	22	820	899101	22	19	51	M	657011	22	19	35
QQ6									868005	23	21	51	I				
Eastar	2.0		AT/MT	L/R					899175	28	25	55,5	O	699090	25	24	41
Eastar	2.0		AT/MT	L/R					814030	28	32	55,5	O				
Eastar														668005	25	33	41
Eastar														668006	25	24	41
Eastar	1.9 D		MT						868008	28	34	55,5	O				
Fengyun	1,8		MT	L/R					899133	22	32	53,2	O	699051		32	
Cowin	1,8		MT	L/R					853004	22	30	51	I	603003		33	
Cowin			MT	L/R					853004	22	30	51	I	668003	25	22	40
Cowin			MT											665005	25	22	40
Cowin				L	268007	22		524	868003	22	30	53	I	603006		33	
Cowin A15		2009	AT						868004	22	22	53,2	I				
Cowin	1,6	2005	AT	L	268008	22	25	596	868003	22	30	53	I	668007	25	23	40
Cowin	1,6	2005	AT	R	268009	22	25	896	868003	22	30	53	I	668007	25	23	40
CHERY A5	1,6		MT	L	268005	28	25	620	868002	28	30	55.5	I	668002	25	24	41
CHERY A5	1,6		MT	R	268006	28	25	976	868002	28	30	55.5	I	668002	25	24	41
CHERY A5														668006	25	24	41
CHERY A5														668004	25	28	41
RELY V5			MT	L/R					899175	28	25	55,5	O				
Tiggo	2.0/2.3		MT	L/R					868001	26	30	63	I				
Tiggo									868007	26	25	58	M				
Xiali																	
N5			MT	L	275005	24	25	607	814070	24	21	54	M	614018	25	20	33
2000			AT	R	259263	24	25	596	859139	24	21	56	I	699044	25	20	45
2000			MT						859139	24	21	56	I	699044	25	20	45
3 CYL (Three-cylinder)			MT						814005	24	19	54	M	614001	23	19	45
3 CYL (Three-cylinder)			MT	L	214013	24	23	638	814013	24	21	54	M	614001	23	19	45
3 CYL (Three-cylinder)			MT	R	214014	24	23	834	814013	24	21	54	M	614001	23	19	45



CAR APPLICATION	YEAR	MT/AT	L/R	GSP DRIVE SHAFT	Dimension			GSP Outer CV Joint	Dimension				GSP Inner CV Joint	Dimension			
					A	B	L		A	B	C	P		A	B	C	
3 CYL (Three-cylinder)			L	214048	24	23	638	814014	24	21	54	M	614016	23	21	45	
3 CYL (Three-cylinder)			R	214047	24	23	838	814014	24	21	54	M	614016	23	21	45	
4 CYL (Four-cylinder)		MT						814013	24	21	54	M	614002	25	19	45	
4 CYL (Four-cylinder)		MT						865001	24	21	54	I					
4 CYL (Four-cylinder)		MT	L	214031	24	25	601	814013	24	21	54	M	614003	25	19	45	
4 CYL (Four-cylinder)		MT	R	214032	24	25	881	814013	24	21	54	M	614003	25	19	45	
4 CYL (Four-cylinder)			L	214050	24	25	561	865001	24	21	54	I	614013	25	20	45	
4 CYL (Four-cylinder)			R	214049	24	25	914	865001	24	21	54	I	614013	25	20	45	
BRILLIANCE																	
BRILLIANCE	2.0		AT/MT	L	299123	25	25	677.5	839071	25	30	53,8	I	699082	25	24	41
BRILLIANCE	2.0		AT/MT	R	299124	25	25	985	839071	25	30	53,8	I	699082	25	24	41
BRILLIANCE	2,4		AT	L					839071	25	30	53,8	I	639039	27	24	41
BRILLIANCE	2,4		AT	R					839071	25	30	53,8	I	639039	27	24	41
BRILLIANCE	2,4		MT	L					839071	25	30	53,8	I	671001	25	24	41
BRILLIANCE	2,4		MT	R					839071	25	30	53,8	I	671001	25	24	41
Zunchi	2.0								839071	25	30	53,8	I	639039	27	24	41
BRILLIANCE JUNJIE	1.8/2.0		MT	L	239131	25	25	677,5	839133	25	30	54	I	671001	25	24	41
BRILLIANCE JUNJIE	1.8/2.0		MT	R	239130	25	25	985	839133	25	30	54	I	671001	25	24	41
FAW (First Automobile Work shop)																	
Xingfushizhe	1.0		MT						875018	24	21	47	M				



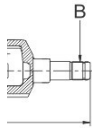
NOTE

domestic engine

imported engine

JEEP

JEEP

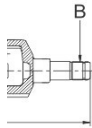


NOTE

For Rear side

(engine 4G13) (2200200U8010)

(engine VVT) (220100U8020)



NOTE

(engine VVT) (220200U8020)

diesel

Domestic engine

BMW engine

Business car

Four-cylinder

